

ETM-510APC SPECIFICATION

The manufacturer reserves the right to modify the design, specifications or mechanisms, to improve the performances, without prior notice. All the specifications shown here are for reference only.

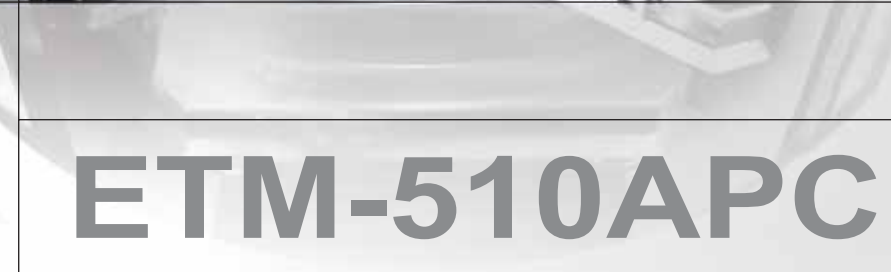
Item	Unit	ETM-510APC
Travel	Max. Travel For X Axis	mm 510
	Max. Travel For Y Axis	mm 360
	Max. Travel For Z Axis	mm 450
	Spindle Nose To Table	mm 160-610
Spindle	Spindle Speed	rpm 8000 ; 10000(optional) / 12000(optional)
ATC System	Tool Q'ty	pcs Arm type 20T (optional)
	Max. Tool Diameter	mm 65
	Max. Tool Length	mm 200
	Max. Tool Weight	kg 3
	Tool Shank	BT30
Motor	Spindle Motor	kw(HP) 3.7 KW , 5.5 KW (optional)
	X / Y / Z Servo Motor	kw 1.0 / 1.0 / 1.0
Table	Table Size	mm (560 x 400) x 2
	Max. Table Capacity	kg 200 x 2
	T-slot (Center x width x No.)	mm 100 x 14 x 5
Feed Rate	X Rapid travel	M/mm 36 liner / 48 liner (optional)
	Y Rapid travel	M/mm 36 liner / 48 liner (optional)
	Z Rapid travel	M/mm 24 liner / 48 liner (optional)
	Cutting feed rate	mm/mim 1-10000
Controller	Mitsubishi	64SM
Other	Machine Weight	kg 4300
	Power Requirement	KVA 10
Coolant Water (L)	Air requirement	kg/cm² 6

Standard Accessories

- Fully enclosed guard
- Chip auger
- Auto lubrication system
- Leveling block & screws
- Tool box
- Work light
- Alarm light
- Portable air gun
- Portable flush gun
- Mechanical / Electrical operation manual
- Rigid tapping
- Electric box heat exchanger
- Hydraulic 60L
- Arm ATC 20T system
- 3 axes telescopic covers
- Floating draw bar mechanism (BT-30)
- RS-232 transmission
- Central guided counterweight mechanism

Optional Accessories

- Spindle programmable air blow
- Fanuc / Mitsubishi / Siemens controller
- Wash down system
- 4th rotary table
- Spindle 10000/12000
- Spindle air seal system
- 3 axes Linear scale
- Spindle oil cooling system
- Tool probe system
- Auto tool length measure
- Oil demister
- Disc oil / coolant separator
- CE Safty Door
- X/Y/Z axis roller type linear way
- Spindle ring splash



ETM-510APC

Auto Pallet Change APC Tapping Machining Center

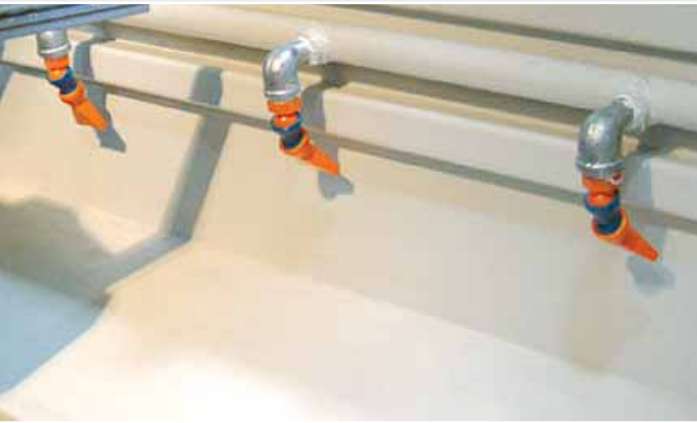


EQUIPTOP HITECH CORP.

NO.500, SAN FENG RD., HOULI HSIANG, TAICHUNG, TAIWAN

- TEL:+886-4-25576060
- FAX:+886-4-25569677.25575866
- e-mail:equiptop@ms18.hinet.net
- http://www.equiptop.com.tw





Chips wash down removal mechanism for quick cheating.

APC Tapping Machining Center

ETM-510APC Auto Pallet Change

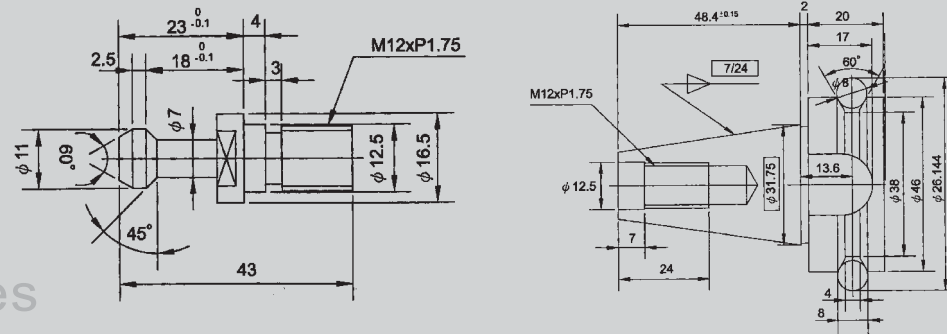
Popular Innovative Pallet Change
Efficient Process, Working
High Precision & Strict Quality



High precision and premium quality Germany linear (optional) ways with wide blocks to resist wear, ensure high accuracy, excellent rigidity.

TOOL BT30

- X AXIS 510 mm
- Y AXIS 360mm
- Z AXIS 450mm



Excellent Features
Provide Value



Controller Color screen.



Arm type ATC 20 tools:
The fast, simple and long-life automatic tool changer provide stable and reliable tool change.



A simple but efficient removal mechanism can easily move the chips to rear side of the machine.



Air pressure counterweight mechanism to uplift for Z axis screw and motor.



Convenient & simple and easy to use tool stand including tool-locked device.



PROMPT · ACCURACY · MODERNIZE